



MABELLEarts Site Landscape

22-08-26





A red pop-up tent on the left side of the market. Underneath, a vendor wearing a red cap and a black vest is working. The tent is surrounded by blue plastic crates and white bins filled with fresh produce. A striped tablecloth is draped over a table in the foreground.

A white pop-up tent in the center of the market. A woman in a light blue shirt is pushing a yellow shopping cart. In the foreground, a blue pallet is loaded with several large brown paper bags of produce. A green shopping cart is also visible nearby.

Two men standing in the middle ground. One man is wearing a plaid shirt and holding a brown paper bag, while the other is wearing a white tank top. They appear to be engaged in conversation.





MABELLEpark



MABELLE PARK

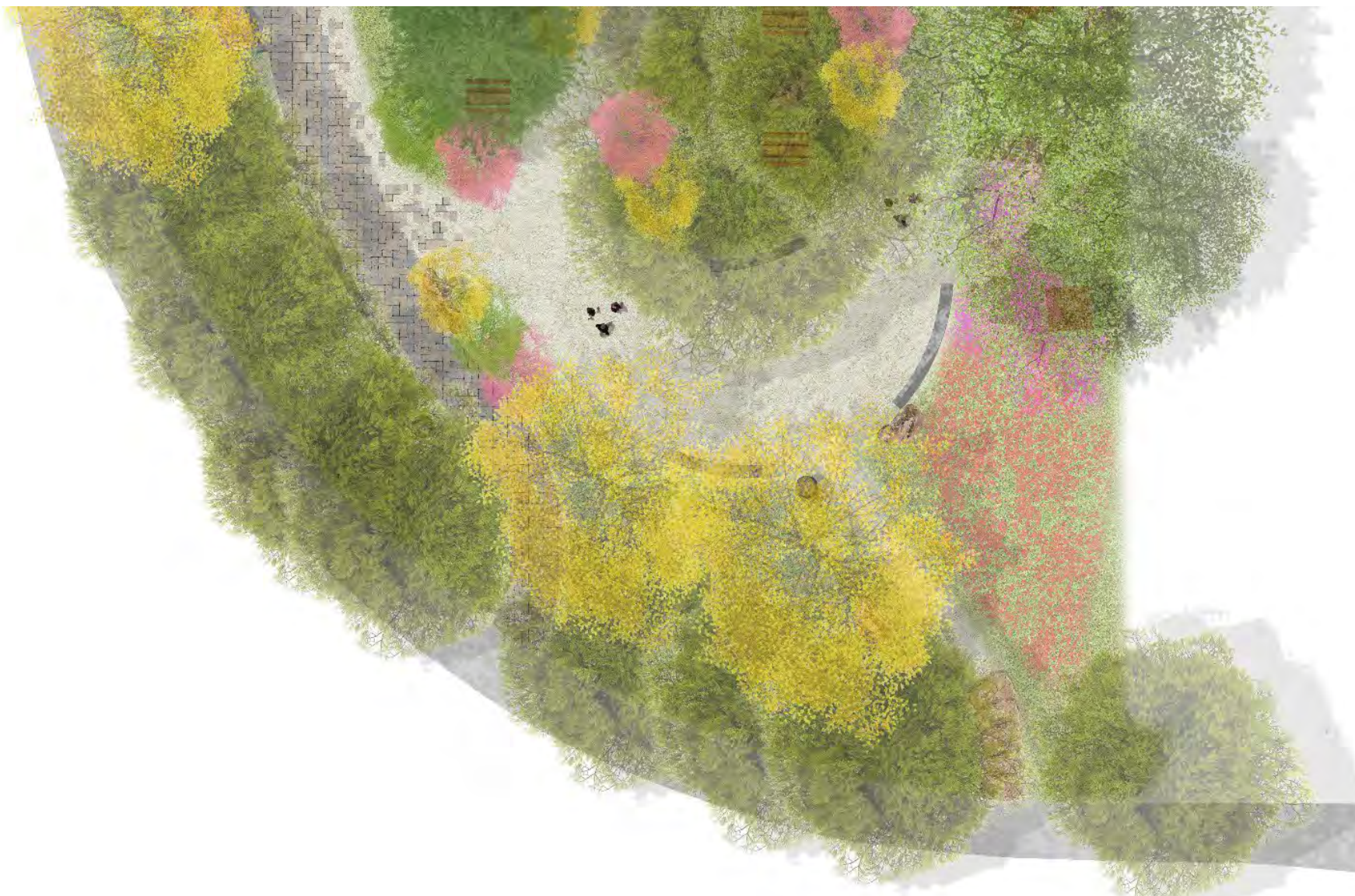
LEGEND

- | | |
|--|--|
| 1. PROPOSED BUILDING AND DECK | 10. ADJACENT PARKING STRUCTURE |
| 2. ACCESSIBLE STONE PATHWAY | 11. PICNIC TABLE |
| 3. SEAT WALL | 12. COMMUNITY TABLE |
| 4. GATHERING AREA
LIMESTONE SCREENING SURFACE | 13. CONCRETE BENCH |
| 5. MOVABLE CEREMONIAL FIREPIT | 14. RELOCATED BENCHES/
CONCRETE BENCH |
| 6. OUTDOOR KITCHEN | 15. EXISTING GARDEN |
| 7. COVERED WATER FEATURE | 16. EXISTING SHED |
| 8. PROPOSED GARDEN | 17. ACCESSIBLE ENTRANCE |
| 9. PROPOSED SHED | 18. PARK ENTRANCE |

MABELLEpark



MABELLEpark



Pillars of MABELLEpark

A place to connect with nature

Place of refuge
Greenspace
Exposure to nature
Gardens
Trees
Canopy
Wildlife
Connection with land

A place to work

Aware of context
Local economy
Flexibility
Purpose-driven
Amenities
Education
Site as resource
Generator

A place to build relationships

Welcoming spaces
Gathering
Place to be seen
Place to engage
Events
Education
Performance
Celebration
Support

A place to give and receive care

Made-by-Mabelle
Giving to the park
Food
Sense of ownership
Maintenance
Job creation

Pillars can evolve with the changing community and site – strong connections to planting and how the site will grow over time.

Pillars of MABELLEpark

A place to connect with nature

Place of refuge
Greenspace
Exposure to nature
Gardens
Trees
Canopy
Wildlife
Connection with land



Pillars of MABELLEpark

A place to work

Aware of context
Local economy
Flexibility
Purpose-driven
Amenities
Education
Site as resource
Generator



Pillars of MABELLEpark

A place to build relationships

Welcoming spaces

Gathering

Place to be seen

Place to engage

Events

Education

Performance

Celebration

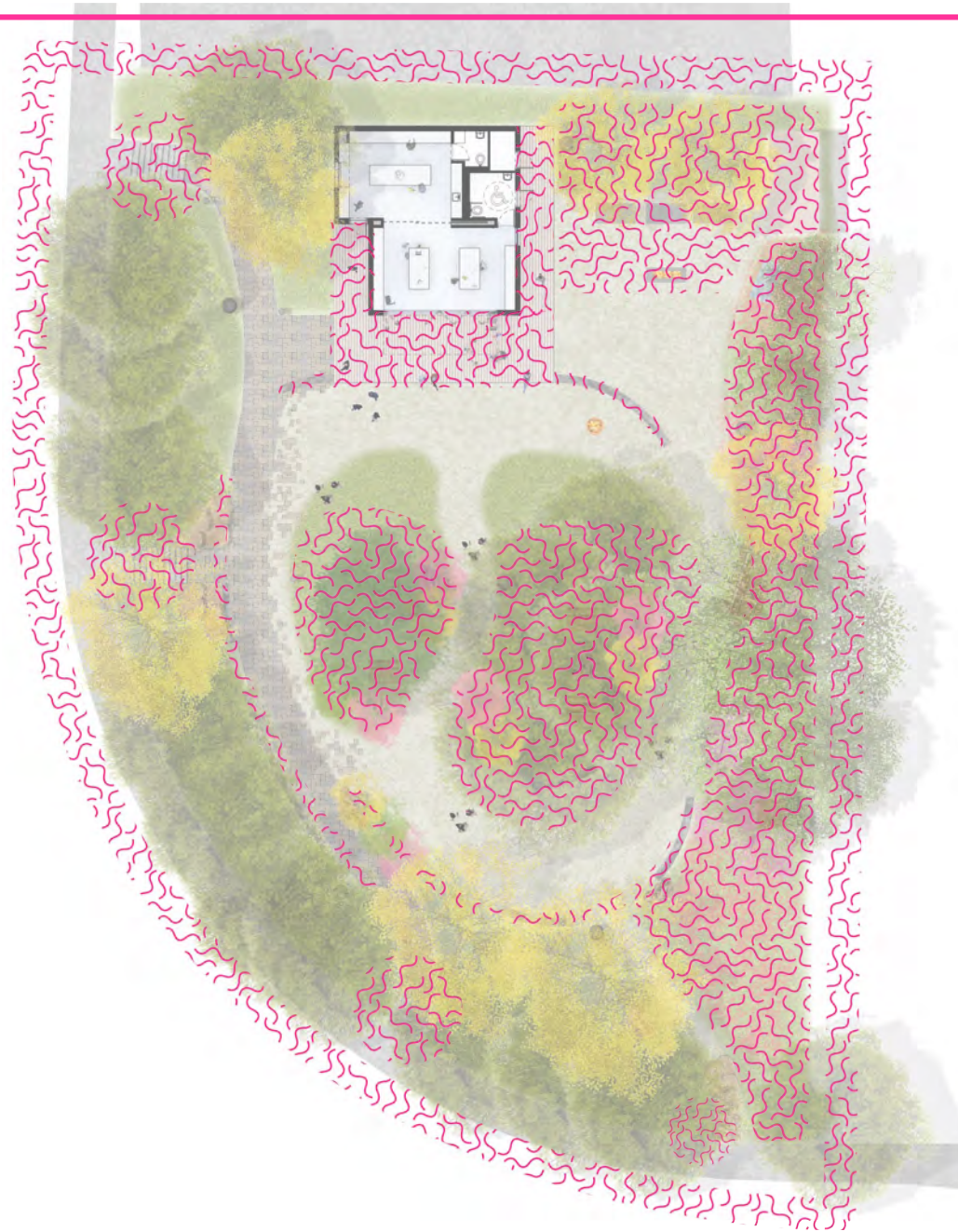
Support



Pillars of MABELLEpark

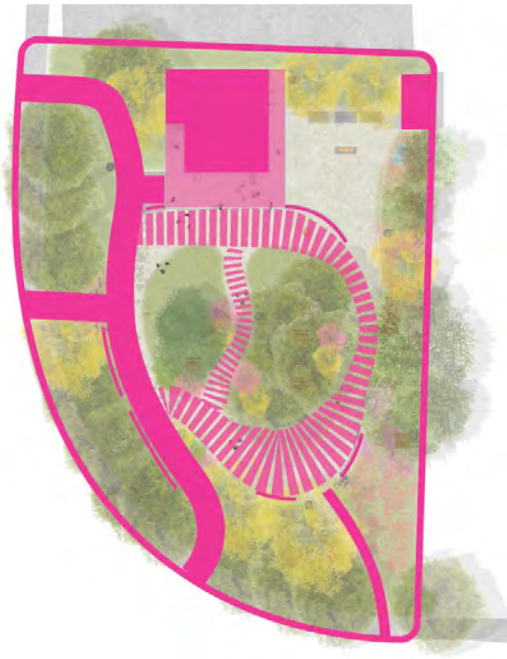
A place to
give and
receive care

Made-by-Mabelle
Giving to the park
Food
Sense of ownership
Maintenance
Job creation



MABELLEpark

Site design:
space + circulation

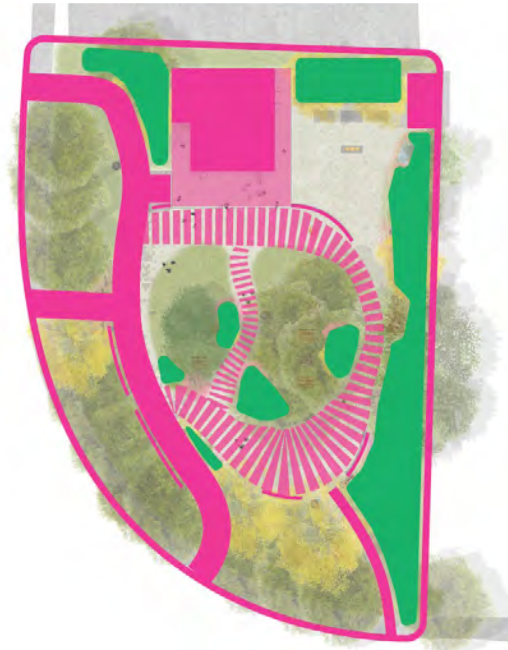


MABELLEpark

Site design:
space + circulation



Site design:
planting pockets

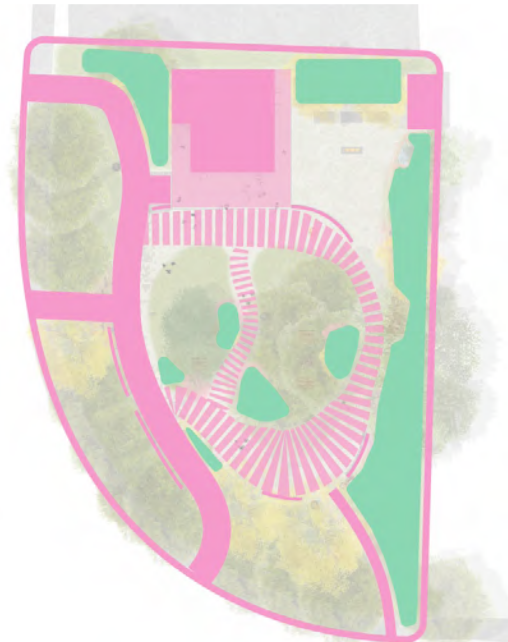


MABELLEpark

Site design:
space + circulation



Site design:
planting pockets

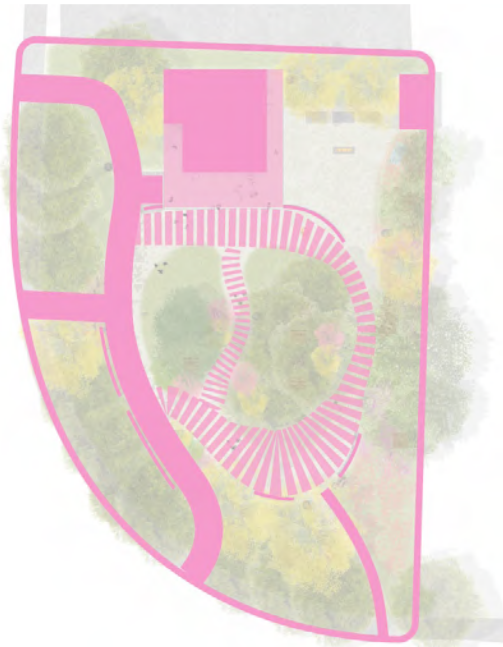


MABELLEarts
community
character and use

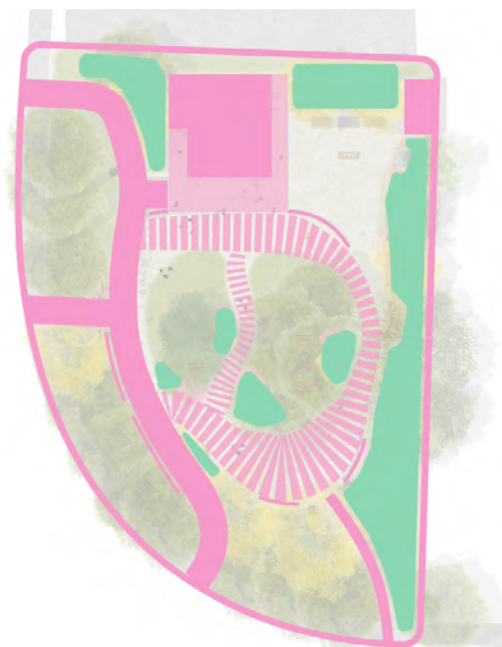


MABELLEpark

Site design:
space + circulation



Site design:
planting pockets



MABELLEarts
community
character and use



MABELLEpark
evolution



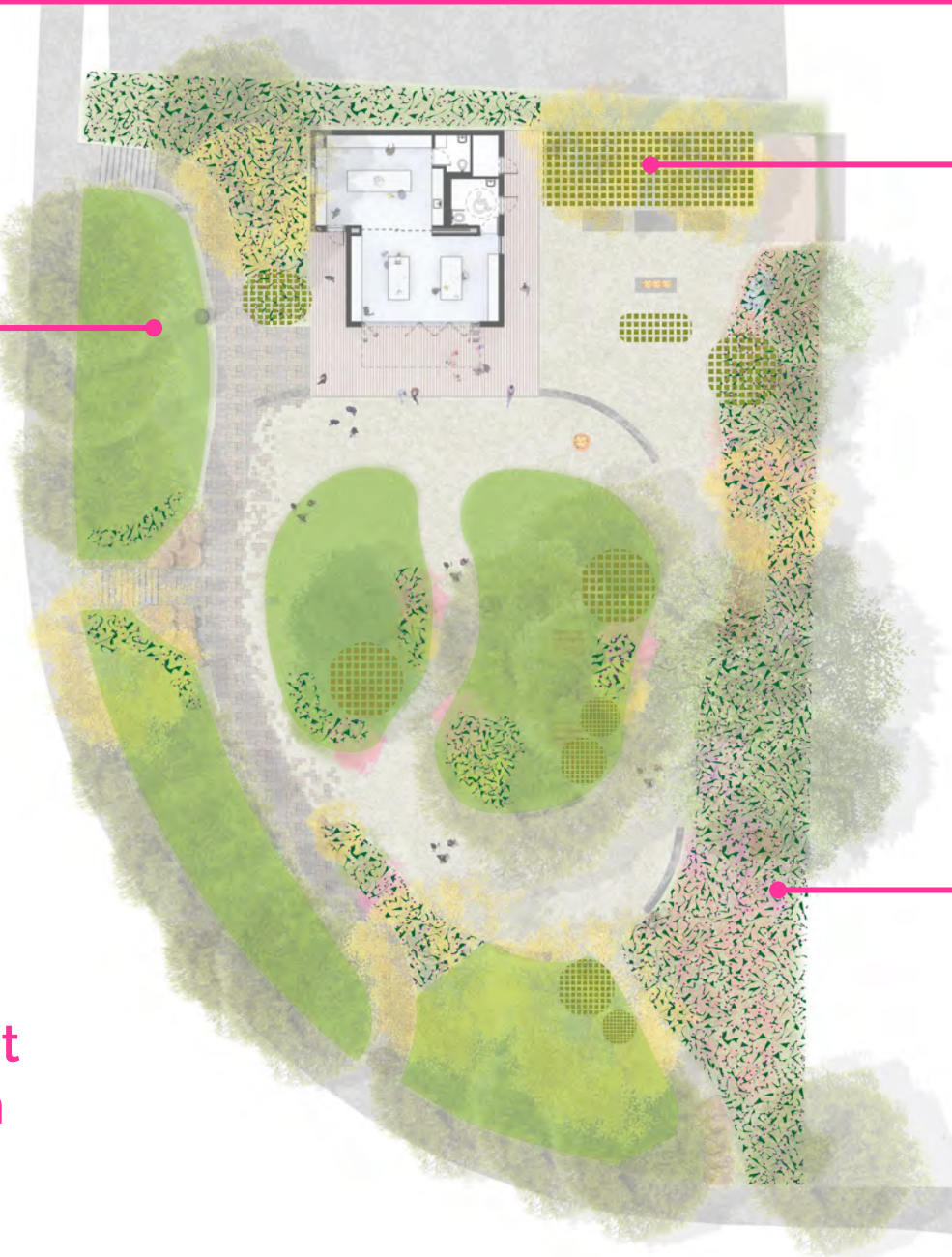
Site design intended to support community character and be a foundation for the space to continue to be used as it is and offer a base for evolving needs.

Planting MABELLEpark

Open spaces + lawn
Gather, relax, observe,
participate

Three general planting
approaches allow for
events and activities to
remain unimpeded while
framing with planting +
growing spaces.

Opportunities for a
changing site environment
daily, seasonally and from
year-to-year.



Harvest beds + planters
Eat, smell, construct, move

Natural + 'wild' plantings
(building on existing gardens
and adding pockets throughout)
Pollinate, eat, smell, construct,
immerse

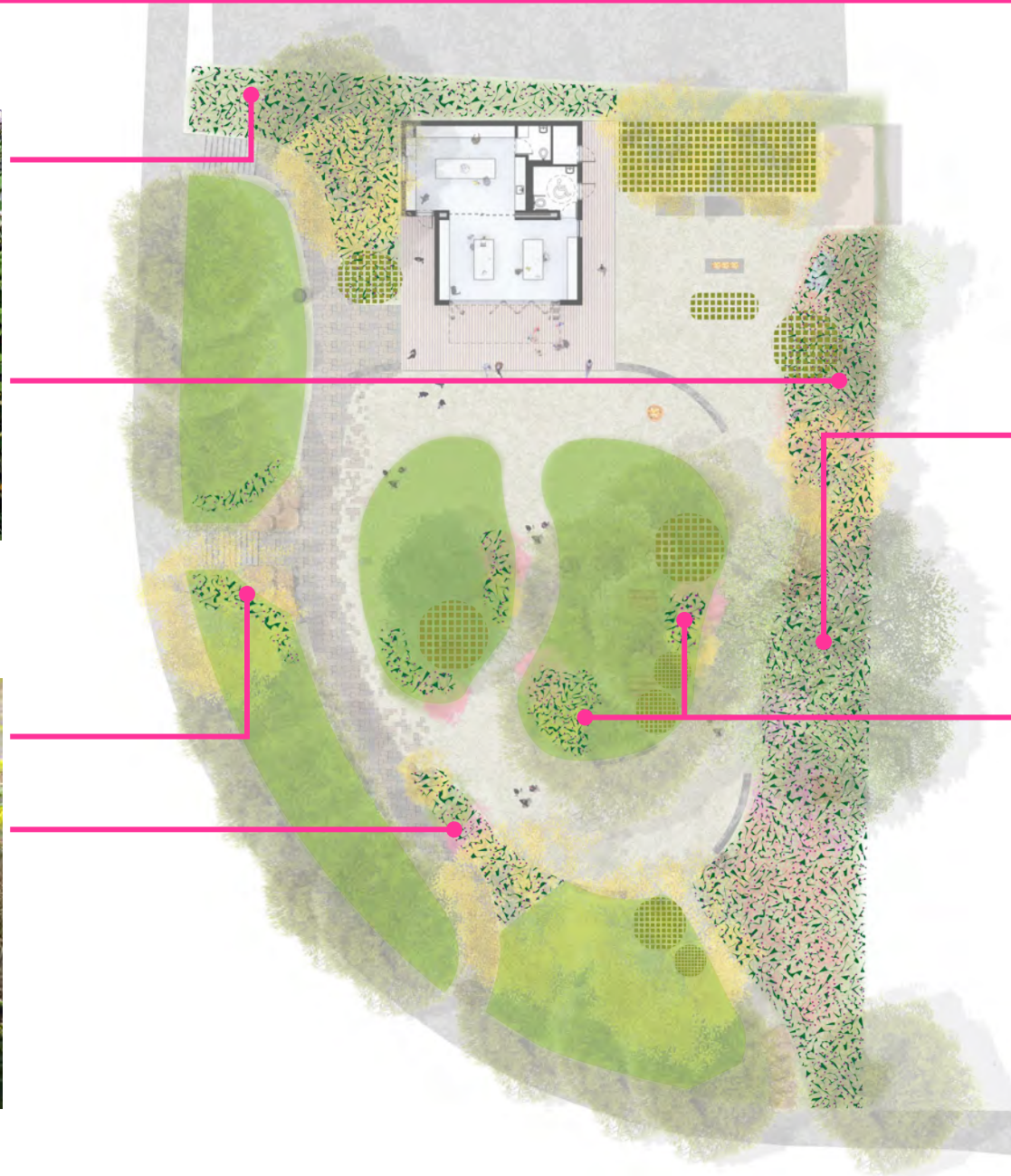
Garden spaces



Blazing star, Black-eyed susan, tickseed, butterfly weed, bluestem, coneflower



Goldenrod, aster, native grasses



Natural + 'wild' plantings



Sumac, redbud, serviceberry



Pockets with flowering shrubs – witchhazel, serviceberry, ferns, anemone, grasses

Natural + 'wild' plantings



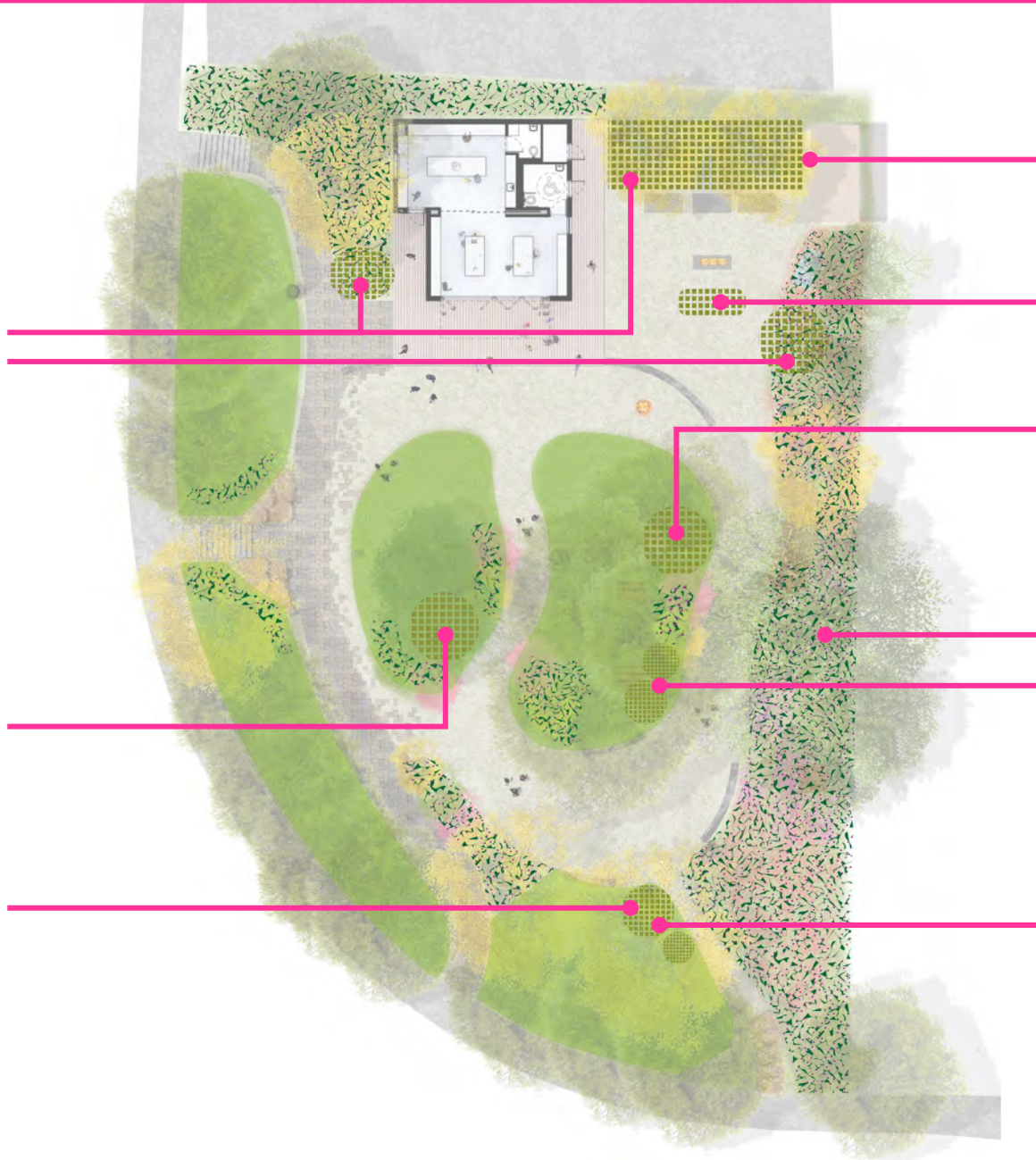
Garden spaces



Sage, perennial herbs



Wild strawberry



Harvest beds + planters



Herbs, seasonal vegetables



Serviceberry,
fruit and nut shrubs

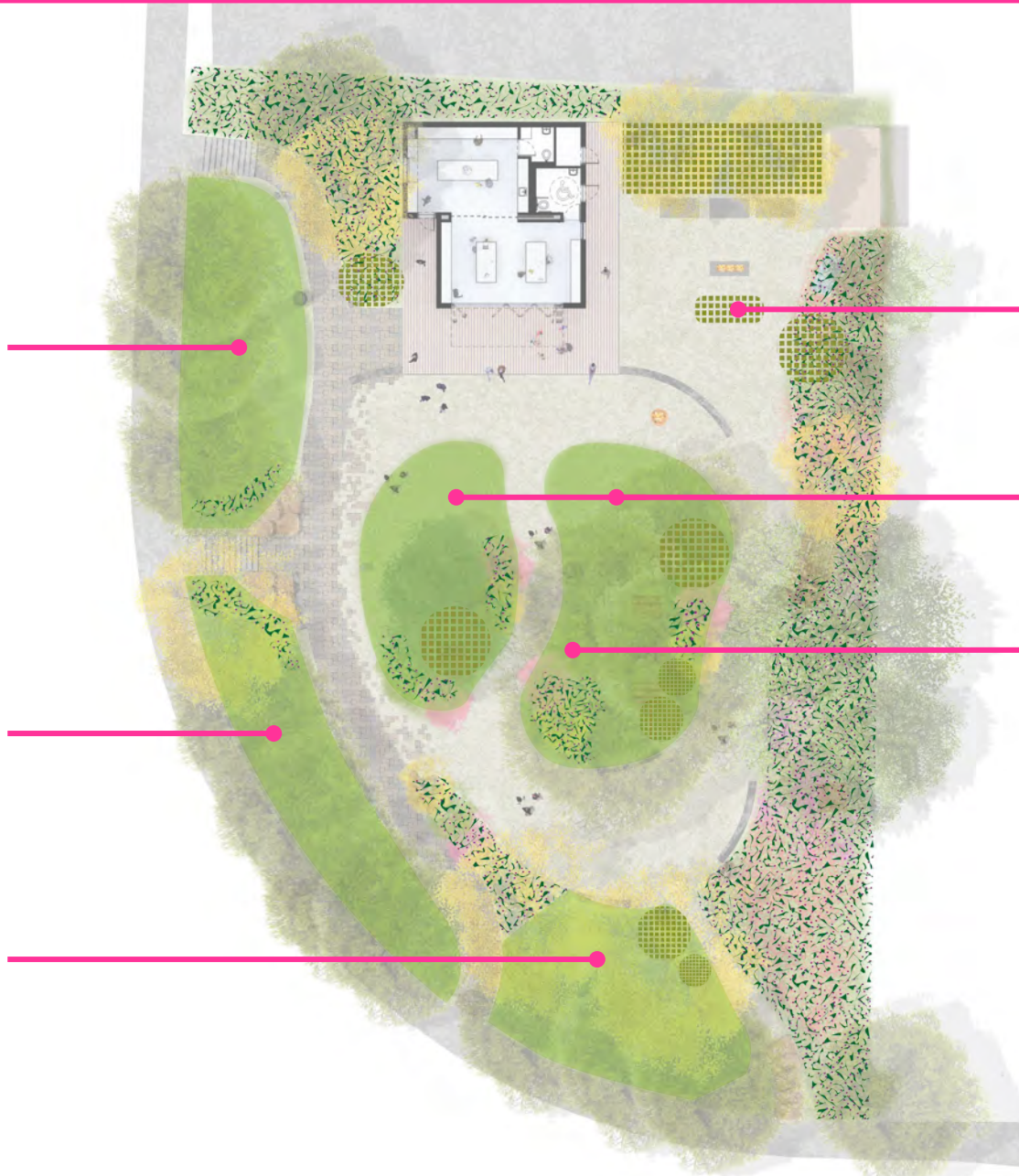
Harvest beds + planters



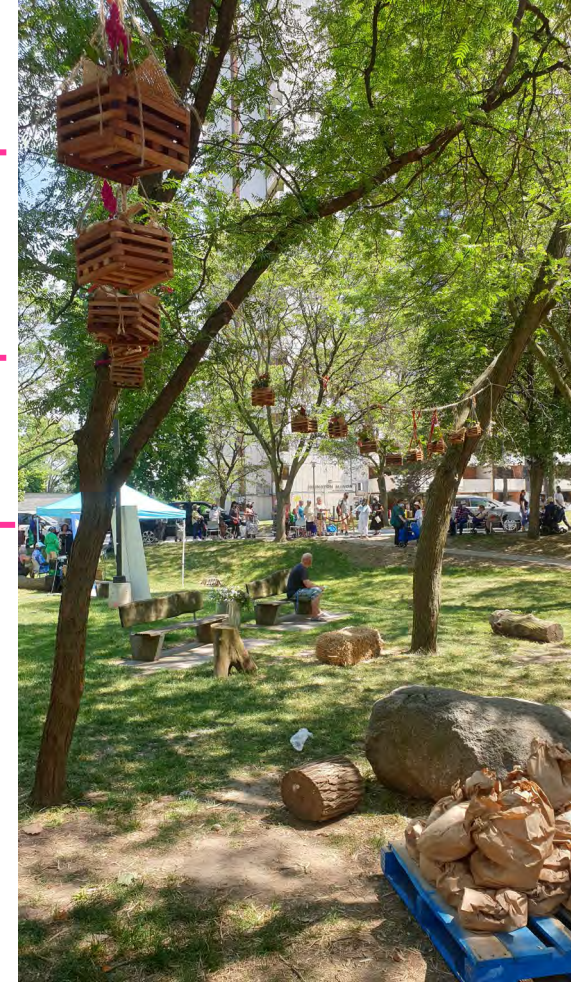
Garden spaces



Treed edge and grass slope from sidewalk

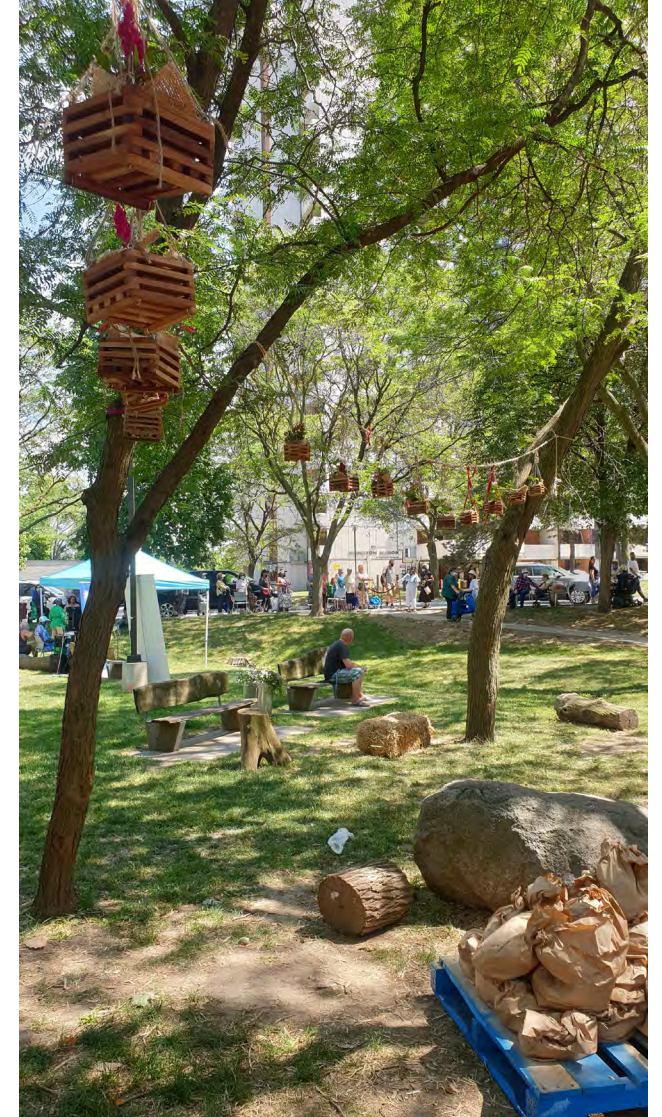


Open spaces + lawn

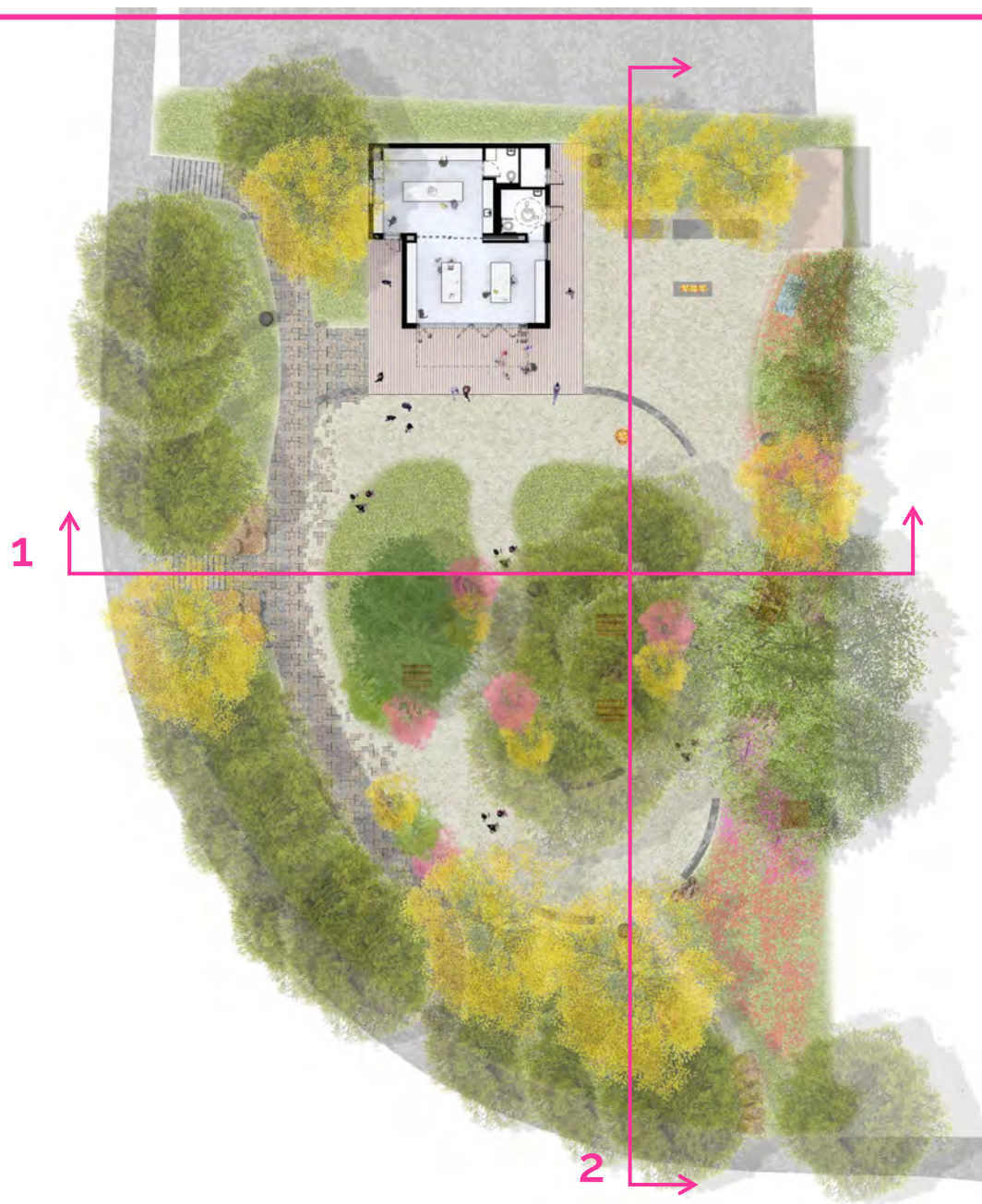


Canopy-covered lawn

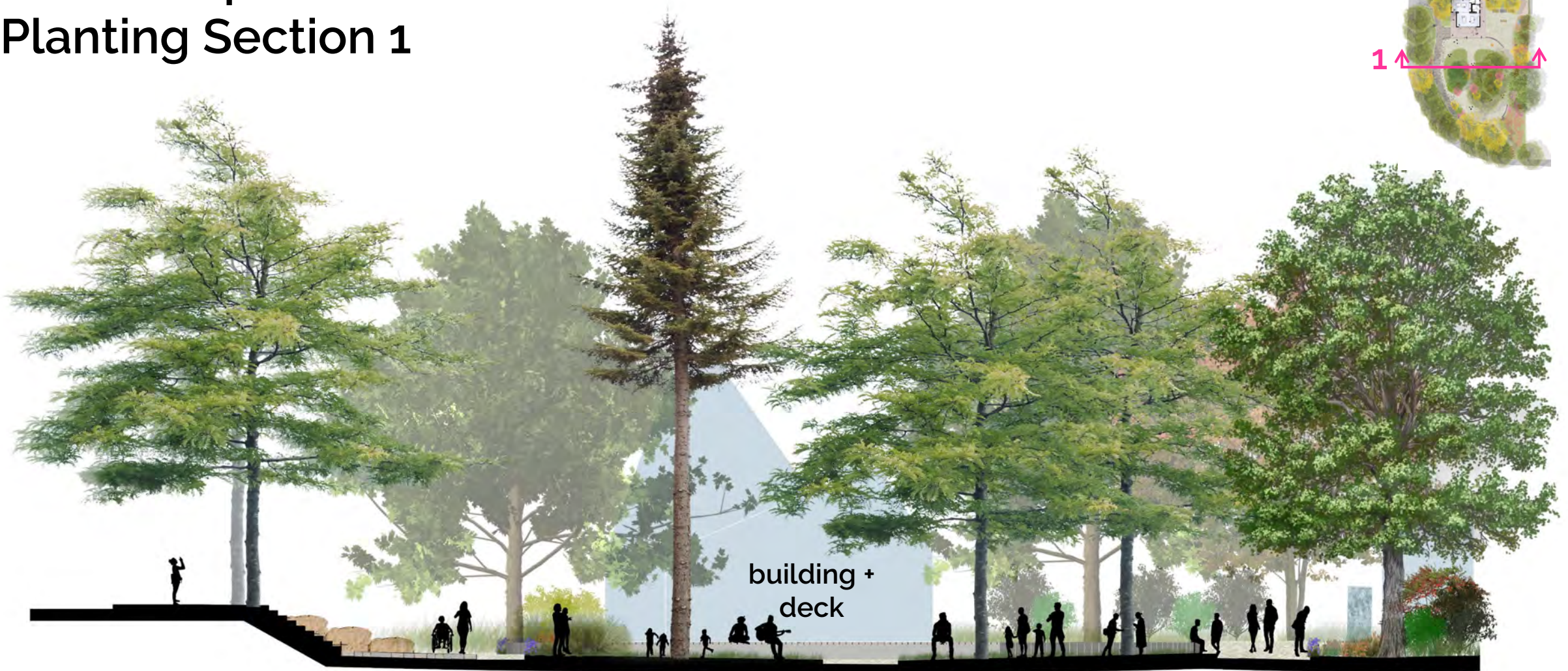
Open spaces + lawn



MABELLEpark



MABELLEpark Planting Section 1



building +
deck

Mabelle Ave.
+ sidewalk

entry
steps

path

'island' with
planting

path

'island' with
planting

path

natural +
wild planting

MABELLEpark Planting Section 1 – Enlargement



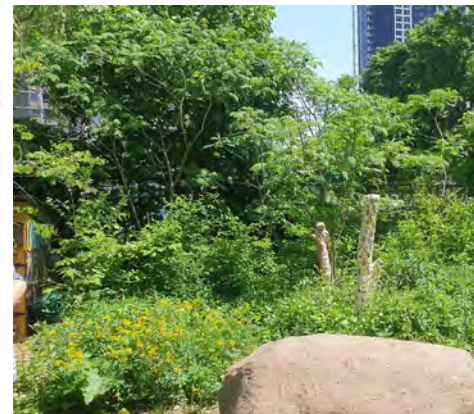
path to
kitchen



natural +
wild planting



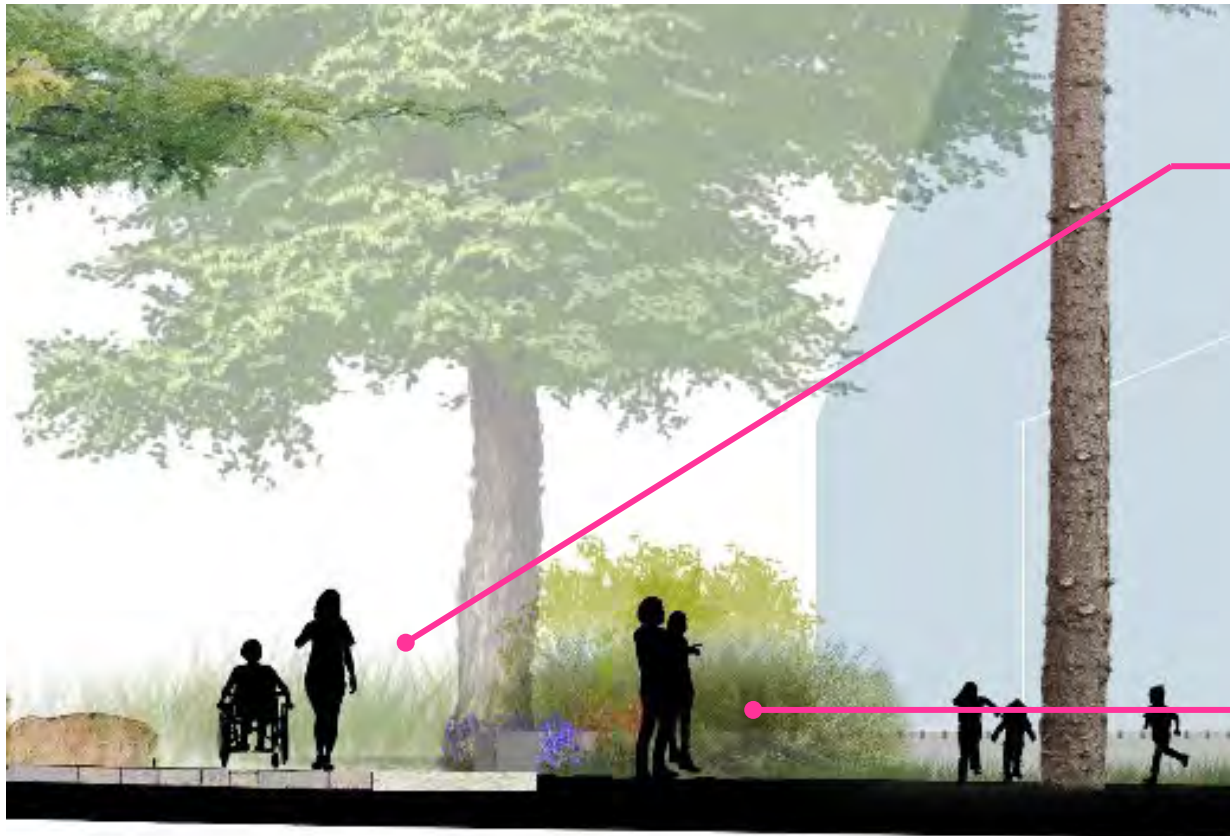
Blazing star, Black-eyed
susan, tickseed, butterfly
weed, bluestem, coneflower



Sumac, redbud, serviceberry



MABELLEpark Planting Section 1 – Enlargement



path



natural +
wild planting



Blazing star, Black-eyed susan, tickseed, butterfly weed, bluestem, coneflower



Sage, perennial herbs

MABELLEpark Planting Section 2



natural + wild
planting

existing
wild garden



harvest beds
+ planters

outdoor
kitchen

path

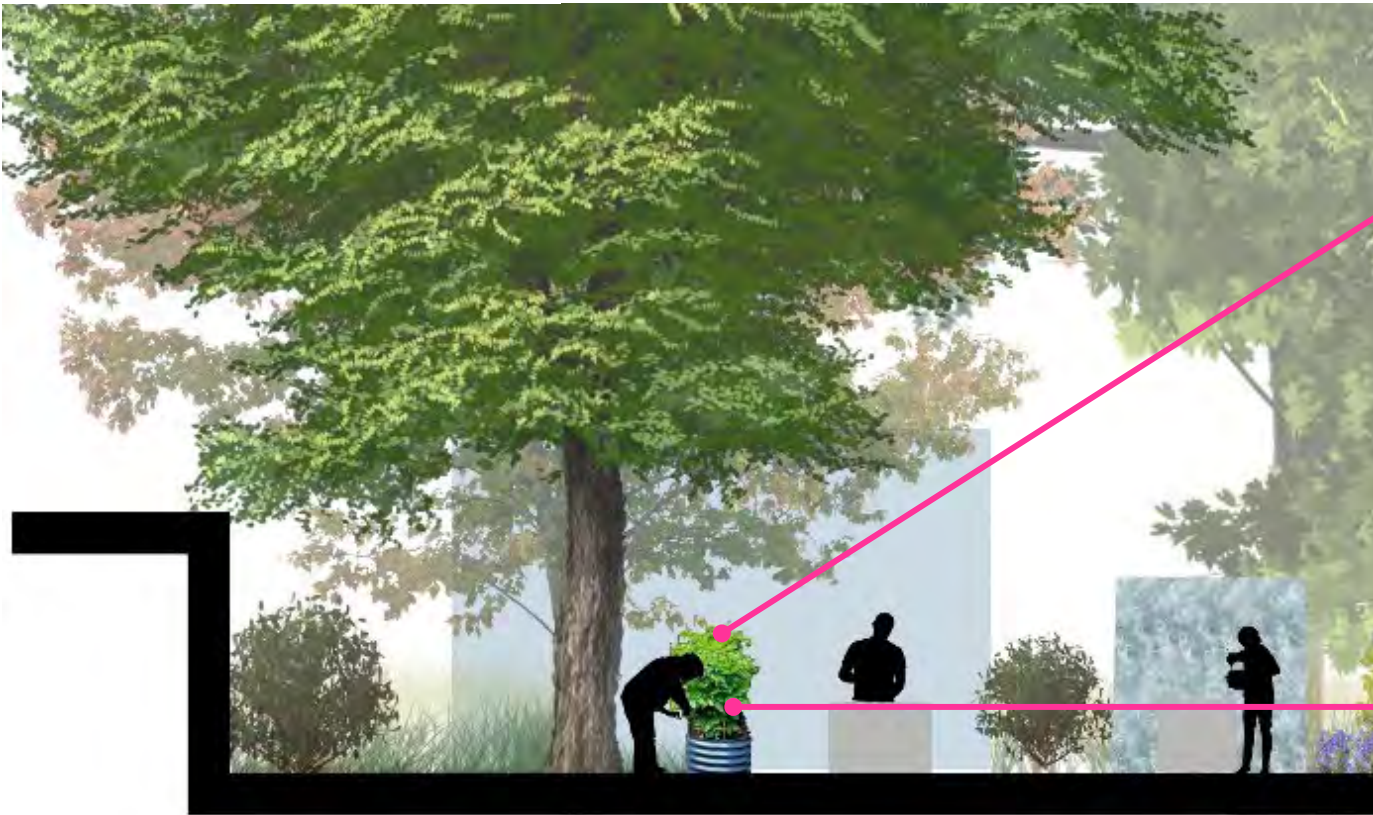
'island' with
planting

gathering
area

Open space
+ lawn

Mabelle
Ave.

MABELLEpark Planting Section 2 Enlargement



harvest beds
+planters

outdoor
kitchen

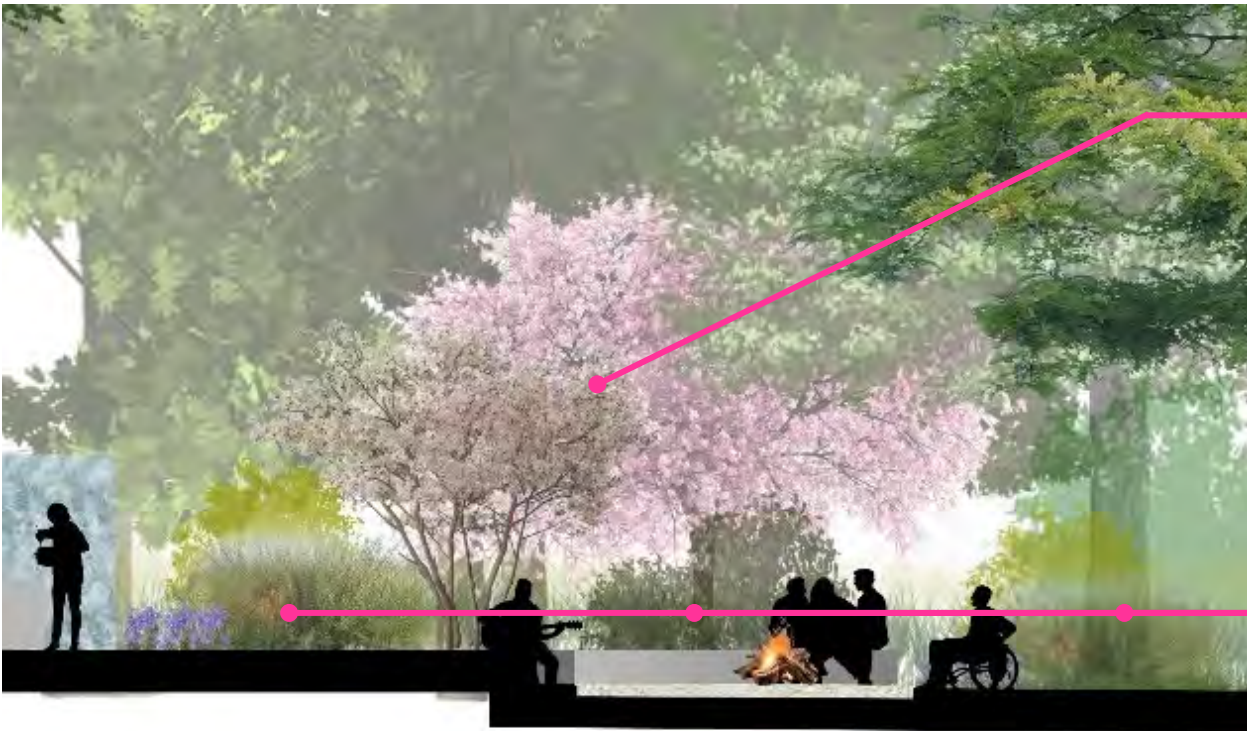


Herbs, seasonal vegetables



Sage, perennial herbs

MABELLEpark Planting Section 2 Enlargement



outdoor kitchen



path

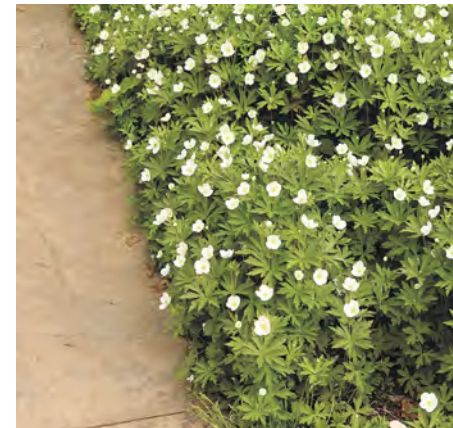


'island' with
planting

2



Eastern red bud and serviceberry



Pockets with flowering shrubs – witch hazel, ferns,
anemone, grasses

Familiarity of place

'Native' planting is important BUT species that may be familiar to the diverse community who use the space can also help create familiarity in the park. Sumac is one example.



Sumac – *Rhus coriaria*



Sumac – *Rhus typhina*

Functional species

Native cultivars and other non-invasive species can be used to support many functions of native species. Pollination, fruit-bearing, form, materials, hardiness, etc.



MABELLEpark



MABELLE PARK

LEGEND

- | | |
|--|--|
| 1. PROPOSED BUILDING AND DECK | 10. ADJACENT PARKING STRUCTURE |
| 2. ACCESSIBLE STONE PATHWAY | 11. PICNIC TABLE |
| 3. SEAT WALL | 12. COMMUNITY TABLE |
| 4. GATHERING AREA
LIMESTONE SCREENING SURFACE | 13. CONCRETE BENCH |
| 5. MOVABLE CEREMONIAL FIREPIT | 14. RELOCATED BENCHES/
CONCRETE BENCH |
| 6. OUTDOOR KITCHEN | 15. EXISTING GARDEN |
| 7. COVERED WATER FEATURE | 16. EXISTING SHED |
| 8. PROPOSED GARDEN | 17. ACCESSIBLE ENTRANCE |
| 9. PROPOSED SHED | 18. PARK ENTRANCE |



MABELLEarts Site Landscape

22-08-26





